



£1,295 Per Calendar Month  
Grogley, Washaway, Bodmin, PL30





Property Description

A secluded detached 3 bedroom cottage surrounded by lawned gardens, in a peaceful wooded setting close to the Camel Trail.

This charming cottage has been recently updated and comprises a side door into a utility room with plumbing for washing machine, door through to the kitchen with range cooker and integrated dishwasher, with space for fridge/freezer, large understairs cupboard. Sitting room and dining room both with new woodburning stoves.

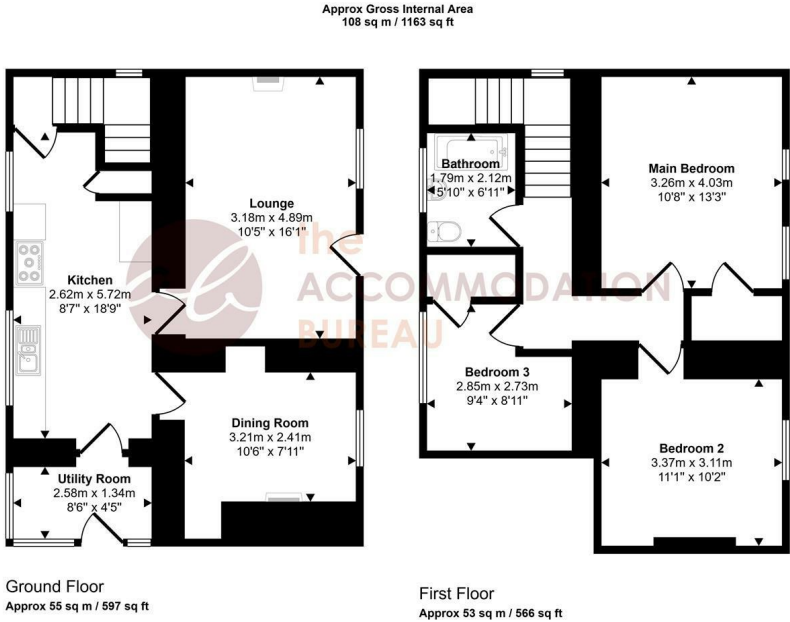
Stairs from the kitchen lead up to the landing, with two double bedrooms and one single bedroom, all with built in wardrobes. Bathroom with electric shower over the bath.

Outside there are large lawned gardens to all sides. Storage shed. There is further land available by separate negotiation.

Oil fired central heating. Borehole water supply. Septic tank drainage.

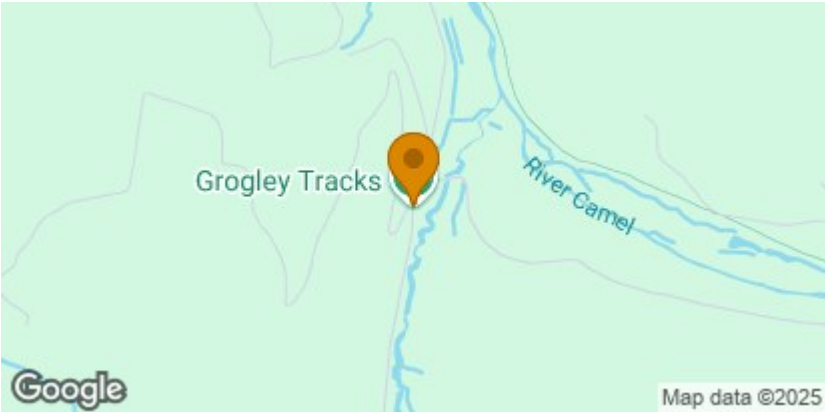
Energy rating E (48). Council Tax Band D. Deposit £1,490. One dog or cat considered. Sorry, no sharers.

Floorplan



This floorplan is only for illustrative purposes and is not to scale. Measurements of rooms, doors, windows, and any items are approximate and no responsibility is taken for any error, omission or mis-statement. Icons of items such as bathroom suites are representations only and may not look like the real items. Made with Made Snappy 360.

Location



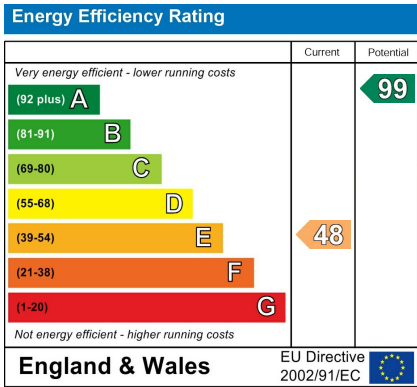
Features

- Rural Location
- Close To The Camel Trail
- Backing Onto Woodland
- Lounge And Dining Room With Wood Burning stoves
- Large Gardens

Letting Information

Rent: £1,295 Per Calendar Month  
Holding Deposit: £100  
Total Deposit Required: £1,490  
Local Authority: Cornwall Council  
Council Tax Band: D  
Furnishing: Unfurnished  
Available From: 4th August 2025

Energy Efficiency Rating



For further information, please call The Accommodation Bureau on 01208 78480.  
7 Turf Street, Bodmin, PL31 2DJ. [bodmin@theaccommodationbureau.com](mailto:bodmin@theaccommodationbureau.com).

These particulars, whilst believed to be accurate are set out as a general outline only for guidance and do not constitute any part of an offer or contract. Prospective tenants should not rely on them as statements of representation of fact, but must satisfy themselves by inspection or otherwise as to their accuracy. No person in this firms employment has the authority to make or give any representation or warranty in respect of the property.

